



# 650V SuperJunction Power MOSFET

## Features

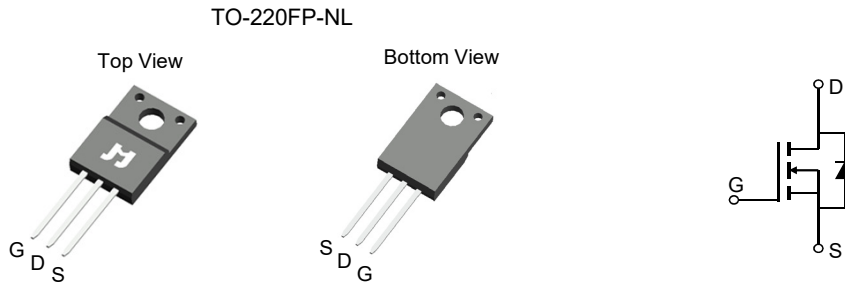
- Extremely Low Gate Charge
- Excellent Output Capacitance ( $C_{oss}$ ) Profile
- Fast Switching Capability
- 100% UIS Tested, 100%  $R_g$  Tested
- Pb-free Lead Plating
- Halogen-free and RoHS-compliant

## Product Summary

Parameter	Value	Unit
$V_{DS}$	650	V
$V_{GS(th\_Typ)}$	3.5	V
$I_D (@ V_{GS} = 10V)^{(1)}$	12.0	A
$R_{DS(ON\_Typ)} (@ V_{GS} = 10V)$	260	$m\Omega$
$E_{oss@400V}$	4.59	$\mu J$

## Applications

- Telecom / Server Power Supplies
- Industrial Power Supplies
- UPS / Solar
- Lighting / Charger / Adapter

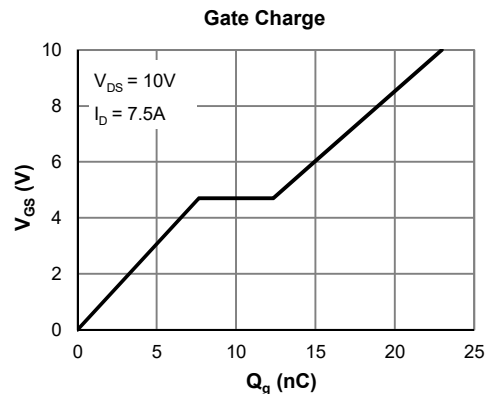
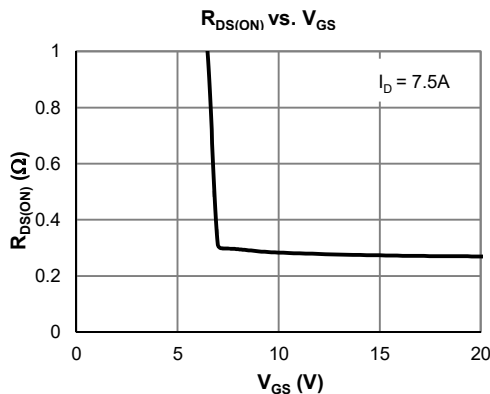


## Ordering Information

Device	Package	# of Pins	Marking	MSL	$T_J$ (°C)	Media	Quantity (pcs)
JMH65R290ACFP-U	TO-220FP-NL	3	H65R290A	NA	-55 to 150	Tube	50

## Absolute Maximum Ratings (@ $T_A = 25^\circ C$ unless otherwise specified)

Parameter	Symbol	Value	Unit
Drain-to-Source Voltage	$V_{DS}$	650	V
Gate-to-Source Voltage	$V_{GS}$	$\pm 25$	V
Continuous Drain Current <sup>(1)</sup>	$I_D$	$T_C = 25^\circ C$	12.0
		$T_C = 100^\circ C$	8.0
Pulsed Drain Current <sup>(2)</sup>	$I_{DM}$	48	A
Avalanche Current <sup>(3)</sup>	$I_{AS}$	7.5	A
Avalanche Energy <sup>(3)</sup>	$E_{AS}$	281	mJ
Power Dissipation <sup>(4)</sup>	$P_D$	$T_C = 25^\circ C$	31
		$T_C = 100^\circ C$	13
Junction & Storage Temperature Range	$T_J, T_{STG}$	-55 to 150	$^\circ C$



**Electrical Characteristics** (@  $T_J = 25^\circ\text{C}$  unless otherwise specified)

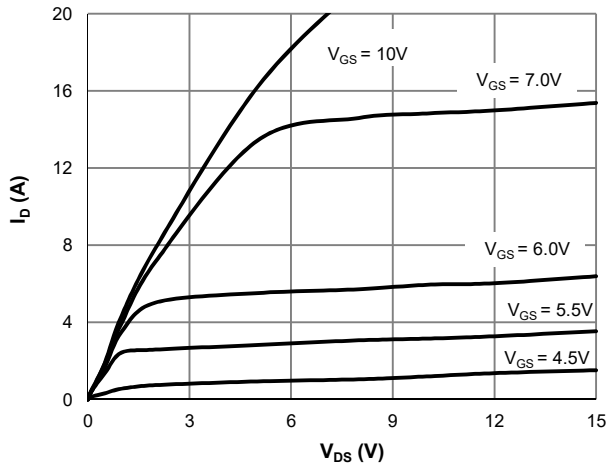
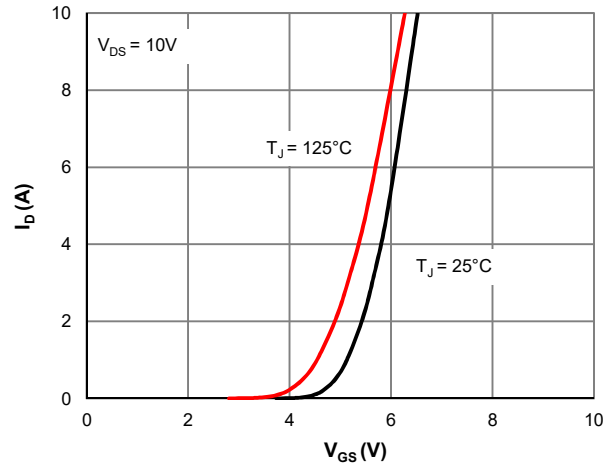
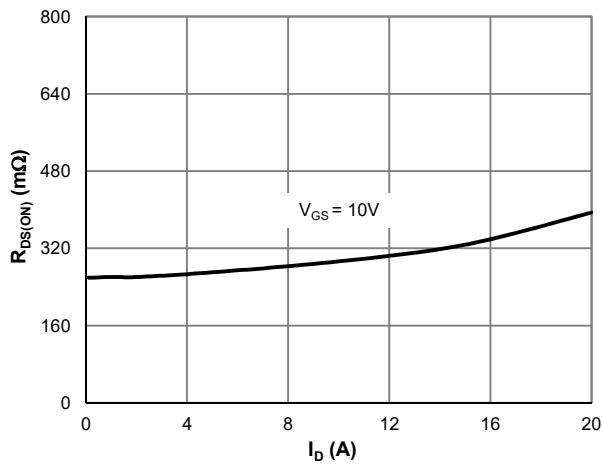
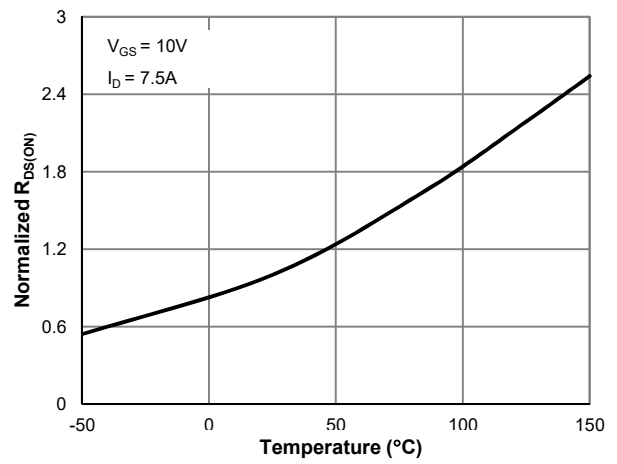
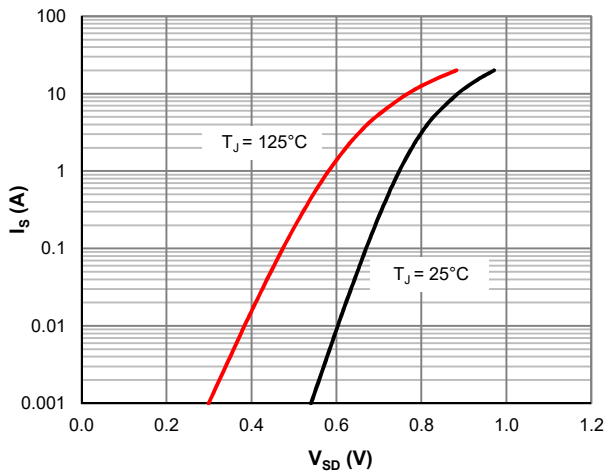
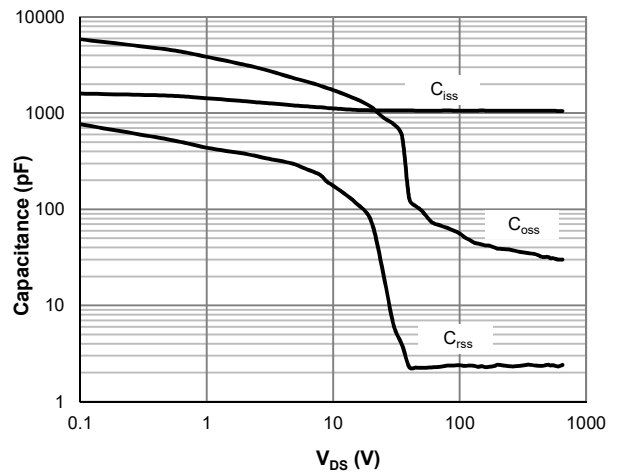
Parameter	Symbol	Conditions	Min.	Typ.	Max.	Unit
<b>STATIC PARAMETERS</b>						
Drain-Source Breakdown Voltage	$V_{(BR)DSS}$	$I_D = 250\mu\text{A}$ , $V_{GS} = 0\text{V}$	650			V
Zero Gate Voltage Drain Current	$I_{DSS}$	$V_{DS} = 650\text{V}$ , $V_{GS} = 0\text{V}$			1.0	$\mu\text{A}$
Gate-Body Leakage Current	$I_{GSS}$	$V_{DS} = 0\text{V}$ , $V_{GS} = \pm 20\text{V}$			$\pm 100$	nA
Gate Threshold Voltage	$V_{GS(th)}$	$V_{DS} = V_{GS}$ , $I_D = 250\mu\text{A}$	2.5	3.5	4.0	V
Static Drain-Source ON-Resistance	$R_{DS(ON)}$	$V_{GS} = 10\text{V}$ , $I_D = 7.5\text{A}$		260	290	m $\Omega$
Diode Forward Voltage	$V_{SD}$	$I_S = 1\text{A}$ , $V_{GS} = 0\text{V}$		0.75		V
Diode Continuous Current	$I_S$	$T_C = 25^\circ\text{C}$			10	A
<b>DYNAMIC PARAMETERS</b> <sup>(5)</sup>						
Input Capacitance	$C_{iss}$	$V_{GS} = 0\text{V}$ , $V_{DS} = 325\text{V}$ , $f = 1\text{MHz}$		1056		pF
Output Capacitance	$C_{oss}$			31		pF
Effective output capacitance, energy related	$C_{o(er)}$	$V_{GS}=0\text{V}$ , $V_{DS}=0\dots 400\text{V}$		57		pF
Effective output capacitance, time related	$C_{o(tr)}$	$I_D=\text{constant}$ , $V_{GS}=0\text{V}$ , $V_{DS}=0\dots 400\text{V}$		182		pF
Reverse Transfer Capacitance	$C_{rss}$	$V_{GS} = 0\text{V}$ , $V_{DS} = 325\text{V}$ , $f = 1\text{MHz}$		10.0		pF
Gate Resistance	$R_g$	$f = 1\text{MHz}$		9.3		$\Omega$
<b>SWITCHING PARAMETERS</b> <sup>(5)</sup>						
Total Gate Charge (@ $V_{GS} = 10\text{V}$ )	$Q_g$	$V_{GS} = 0$ to $10\text{V}$ $V_{DS} = 325\text{V}$ , $I_D = 7.5\text{A}$		22		nC
Gate Source Charge	$Q_{gs}$			7.8		nC
Gate Drain Charge	$Q_{gd}$			7.2		nC
Turn-On DelayTime	$t_{D(on)}$	$V_{GS} = 10\text{V}$ , $V_{DS} = 325\text{V}$ $R_L = 43\Omega$ , $R_{GEN} = 6\Omega$		15.4		ns
Turn-On Rise Time	$t_r$			12.0		ns
Turn-Off DelayTime	$t_{D(off)}$			58		ns
Turn-Off Fall Time	$t_f$			55		ns
Body Diode Reverse Recovery Time	$t_{rr}$	$I_F = 7.5\text{A}$ , $di_F/dt = 100\text{A}/\mu\text{s}$		280		ns
Body Diode Reverse Recovery Charge	$Q_{rr}$	$I_F = 7.5\text{A}$ , $di_F/dt = 100\text{A}/\mu\text{s}$		3.42		$\mu\text{C}$
Peak Diode Recovery Voltage Slope	$dv/dt$	$I_F \leq 8\text{A}$ , $di/dt = 200\text{A}/\mu\text{s}$ , $V_{DS} = 400\text{V}$		15		V/ns
MOSFET $dv/dt$ Ruggedness	$dv/dt$	$V_{DS} = 0\dots 400\text{V}$		50		V/ns

**Thermal Performance**

Parameter	Symbol	Typ.	Max.	Unit
Thermal Resistance, Junction-to-Ambient	$R_{\theta JA}$	55	68	$^\circ\text{C}/\text{W}$
Thermal Resistance, Junction-to-Case	$R_{\theta JC}$	3.5	4.0	$^\circ\text{C}/\text{W}$

**Notes:**

1. Computed continuous current assumes the condition of  $T_{J\_Max}$  while the actual continuous current depends on the thermal & electro-mechanical application board design.
2. This single-pulse measurement was taken under  $T_{J\_Max} = 150^\circ\text{C}$ .
3. This single-pulse measurement was taken under the following condition [ $L = 10\text{mH}$ ,  $V_{GS} = 10\text{V}$ ,  $V_{DS} = 50\text{V}$ ] while its value is limited by  $T_{J\_Max} = 150^\circ\text{C}$ .
4. The power dissipation  $P_D$  is based on  $T_{J\_Max} = 150^\circ\text{C}$ .
5. This value is guaranteed by design hence it is not included in the production test.

**Typical Electrical & Thermal Characteristics**

**Figure 1: Saturation Characteristics**

**Figure 2: Transfer Characteristics**

**Figure 3:  $R_{DS(ON)}$  vs. Drain Current**

**Figure 4:  $R_{DS(ON)}$  vs. Junction Temperature**

**Figure 5: Body-Diode Characteristics**

**Figure 6: Capacitance Characteristics**



Typical Electrical & Thermal Characteristics

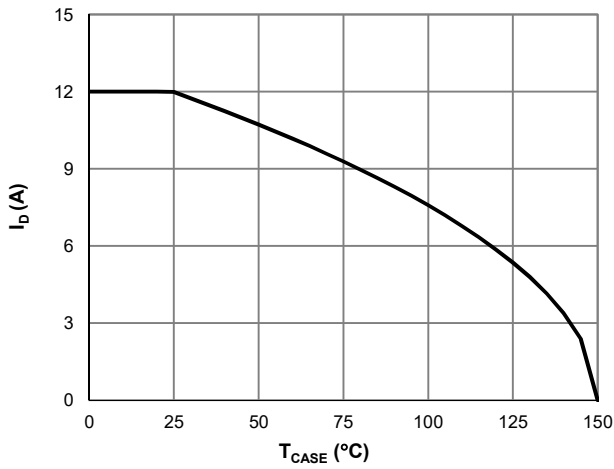


Figure 7: Current De-rating

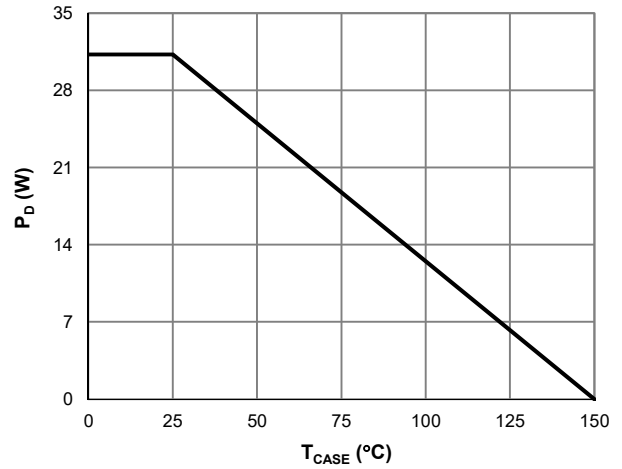


Figure 8: Power De-rating

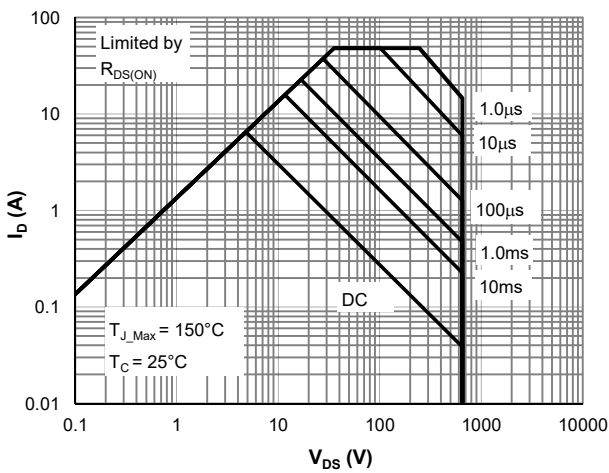


Figure 9: Maximum Safe Operating Area

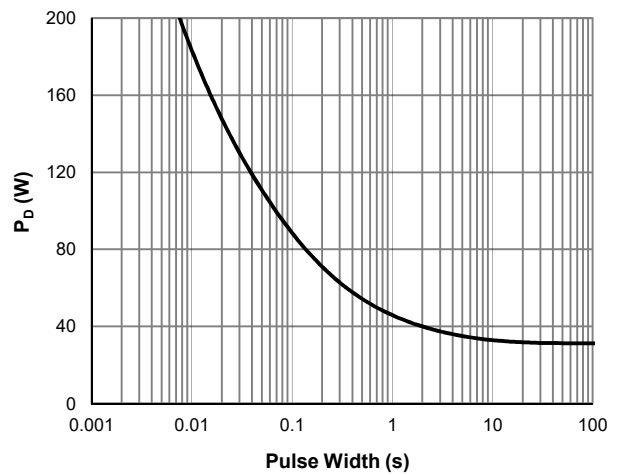


Figure 10: Single Pulse Power Rating, Junction-to-Case

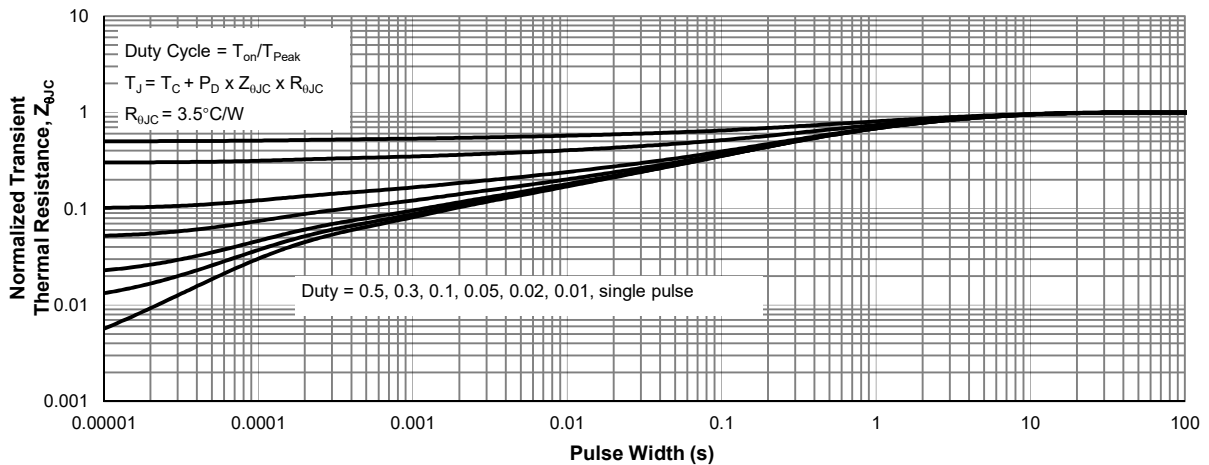
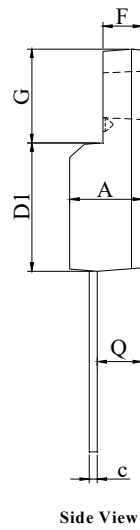
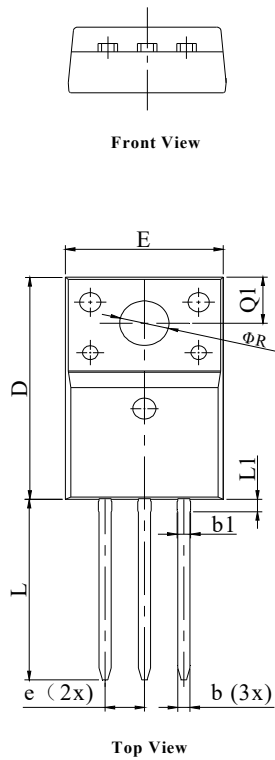


Figure 11: Normalized Maximum Transient Thermal Impedance

**TO-220FP-NL Package Information**
**Package Outline**


DIM.	MILLIMETER		
	MIN.	NOM.	MAX.
A	4.30	4.50	4.70
D	14.70	15.00	15.30
D1	8.50 REF		
E	9.70	10.00	10.30
F	2.50	2.70	2.90
b	0.60	0.70	0.80
b1	0.60	0.80	0.90
c	0.45	0.50	0.60
e	2.60 BSC		
G	6.30	6.50	6.70
L	13.40	13.60	13.80
L1	1.00	1.10	1.20
Q	2.50	2.60	2.70
Q1	2.90	3.00	3.10
R	3.50 REF		