



## 85V 4.2mΩ N-Ch Power MOSFET

### Features

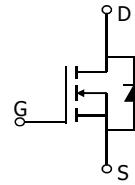
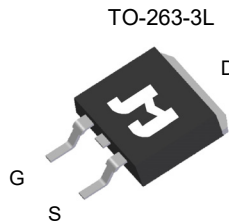
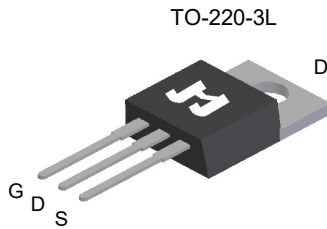
- Ultra-low  $R_{DS(ON)}$
- Low Gate Charge
- 100% UIS Tested, 100%  $R_g$  Tested
- Pb-free Lead Plating
- Halogen-free and RoHS-compliant

### Product Summary

Parameter	Typ.	Unit
$V_{DS}$	85	V
$V_{GS(th)}$	2.8	V
$I_D$ (@ $V_{GS} = 10V$ )	121	A
$R_{DS(ON)}$ (@ $V_{GS} = 10V$ )	4.2	mΩ

### Applications

- Power Management in Telecom., Industrial Automation, CE
- Motor Driving in Power Tool, E-vehicle, Robotics

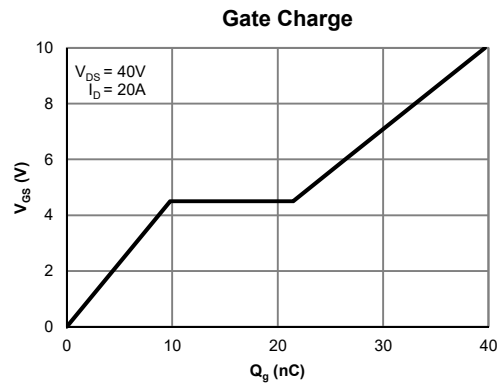
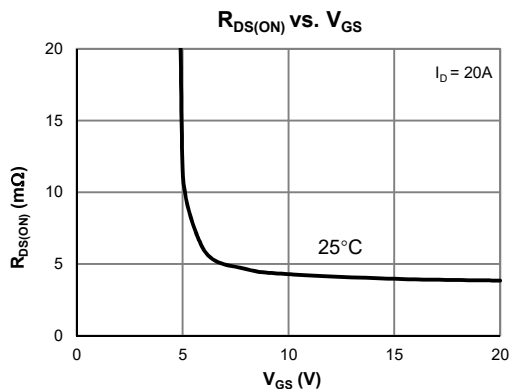


### Ordering information

Device	Package	# of Pins	Marking	MSL	$T_J$ (°C)	Media	Quantity (pcs)
JMSH0805AC-U	TO-220-3L	3	SH0805A	N/A	-55 to 150	Tube	50
JMSH0805AE-13	TO-263-3L	3	SH0805A	1	-55 to 150	13-inch Reel	800

### Absolute Maximum Ratings (@ $T_A = 25^\circ\text{C}$ unless otherwise specified)

Parameter	Symbol	Value	Unit
Drain-to-Source Voltage	$V_{DS}$	85	V
Gate-to-Source Voltage	$V_{GS}$	$\pm 20$	V
Continuous Drain Current <sup>(1)</sup>	$I_D$	$T_C = 25^\circ\text{C}$	121
		$T_C = 100^\circ\text{C}$	76
Pulsed Drain Current <sup>(2)</sup>	$I_{DM}$	484	A
Avalanche Current <sup>(3)</sup>	$I_{AS}$	48	A
Avalanche Energy <sup>(3)</sup>	$E_{AS}$	115	mJ
Power Dissipation <sup>(4)</sup>	$P_D$	$T_C = 25^\circ\text{C}$	130
		$T_C = 100^\circ\text{C}$	52
Junction & Storage Temperature Range	$T_J, T_{STG}$	-55 to 150	°C





**Electrical Characteristics** (@  $T_J = 25^\circ\text{C}$  unless otherwise specified)

Parameter	Symbol	Conditions	Min.	Typ.	Max.	Unit
<b>STATIC PARAMETERS</b>						
Drain-Source Breakdown Voltage	$V_{(BR)DSS}$	$I_D = 250\mu\text{A}, V_{GS} = 0\text{V}$	85			V
Zero Gate Voltage Drain Current	$I_{DSS}$	$V_{DS} = 68\text{V}, V_{GS} = 0\text{V}$ $T_J = 55^\circ\text{C}$			1	$\mu\text{A}$
					5	
Gate-Body Leakage Current	$I_{GSS}$	$V_{DS} = 0\text{V}, V_{GS} = \pm 20\text{V}$			$\pm 100$	nA
Gate Threshold Voltage	$V_{GS(th)}$	$V_{DS} = V_{GS}, I_D = 250\mu\text{A}$	2.0	2.8	4.0	V
Static Drain-Source ON-Resistance	$R_{DS(on)}$	$V_{GS} = 10\text{V}, I_D = 20\text{A}$	TO-263-3L	4.2	5.0	$\text{m}\Omega$
			TO-220-3L	4.5	5.3	$\text{m}\Omega$
Forward Transconductance	$g_{FS}$	$V_{DS} = 5\text{V}, I_D = 20\text{A}$		55		S
Diode Forward Voltage	$V_{SD}$	$I_S = 1\text{A}, V_{GS} = 0\text{V}$		0.7	1.0	V
Diode Continuous Current	$I_S$	$T_C = 25^\circ\text{C}$			130	A

**DYNAMIC PARAMETERS** <sup>(5)</sup>

Input Capacitance	$C_{iss}$	$V_{GS} = 0\text{V}, V_{DS} = 40\text{V}, f = 1\text{MHz}$		2451		pF
Output Capacitance	$C_{oss}$			677		pF
Reverse Transfer Capacitance	$C_{rss}$			18		pF
Gate Resistance	$R_g$	$V_{GS} = 0\text{V}, V_{DS} = 0\text{V}, f = 1\text{MHz}$		1.5		$\Omega$

**SWITCHING PARAMETERS** <sup>(5)</sup>

Total Gate Charge (@ $V_{GS} = 10\text{V}$ )	$Q_g$	$V_{GS} = 0 \text{ to } 10\text{V}, V_{DS} = 40\text{V}, I_D = 20\text{A}$		39.7		nC
Total Gate Charge (@ $V_{GS} = 6\text{V}$ )	$Q_g$			26.4		nC
Gate Source Charge	$Q_{gs}$			9.8		nC
Gate Drain Charge	$Q_{gd}$			11.6		nC
Turn-On Delay Time	$t_{D(on)}$	$V_{GS} = 10\text{V}, V_{DS} = 40\text{V}$ $R_L = 2.0\Omega, R_{GEN} = 6\Omega$		15.3		ns
Turn-On Rise Time	$t_r$			35.4		ns
Turn-Off Delay Time	$t_{D(off)}$			33.2		ns
Turn-Off Fall Time	$t_f$			22.4		ns
Body Diode Reverse Recovery Time	$t_{rr}$		$I_F = 20\text{A}, dI_F/dt = 100\text{A}/\mu\text{s}$		47.5	
Body Diode Reverse Recovery Charge	$Q_{rr}$	$I_F = 20\text{A}, dI_F/dt = 100\text{A}/\mu\text{s}$		81.6		nC

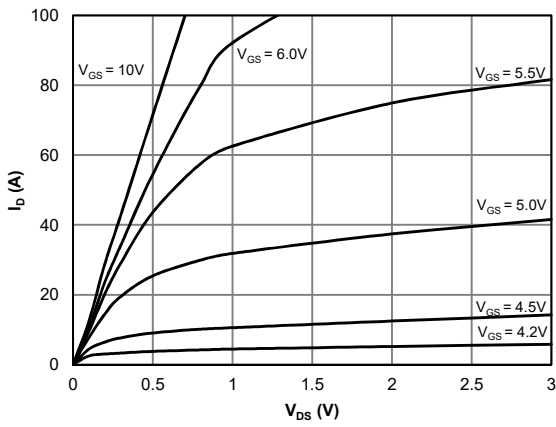
**Thermal Performance**

Parameter	Symbol	Typ.	Max.	Unit
Thermal Resistance, Junction-to-Ambient	$R_{\theta JA}$	45	55	$^\circ\text{C}/\text{W}$
Thermal Resistance, Junction-to-Case	$R_{\theta JC}$	0.8	1.0	$^\circ\text{C}/\text{W}$

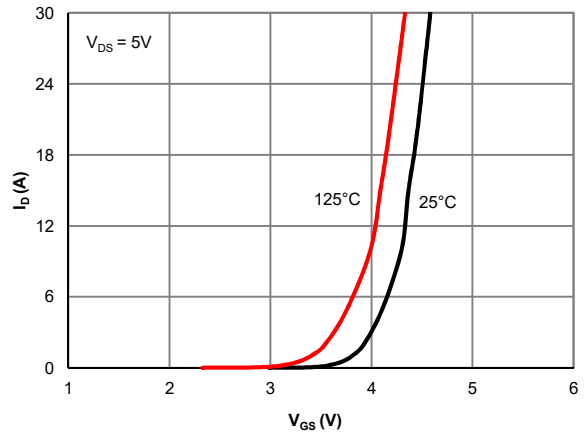
**Notes:**

1. Computed continuous current assumes the condition of  $T_{J\_Max}$  while the actual continuous current depends on the thermal & electro-mechanical application board design.
2. This single-pulse measurement was taken under  $T_{J\_Max} = 150^\circ\text{C}$ .
3. This single-pulse measurement was taken under the following condition [ $L = 100\mu\text{H}, V_{GS} = 10\text{V}, V_{DS} = 40\text{V}$ ] while its value is limited by  $T_{J\_Max} = 150^\circ\text{C}$ .
4. The power dissipation  $P_D$  is based on  $T_{J\_Max} = 150^\circ\text{C}$ .
5. This value is guaranteed by design hence it is not included in the production test.

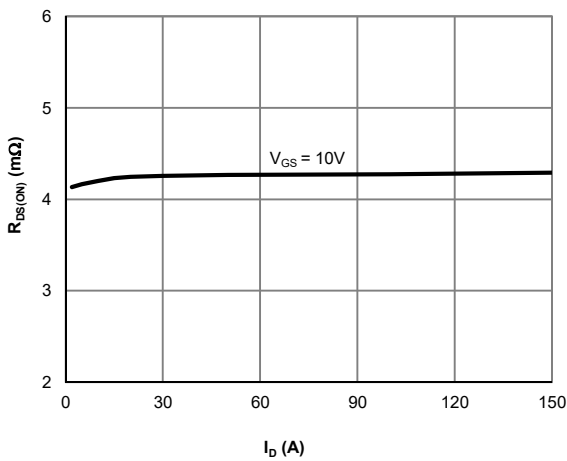
**Typical Electrical & Thermal Characteristics**



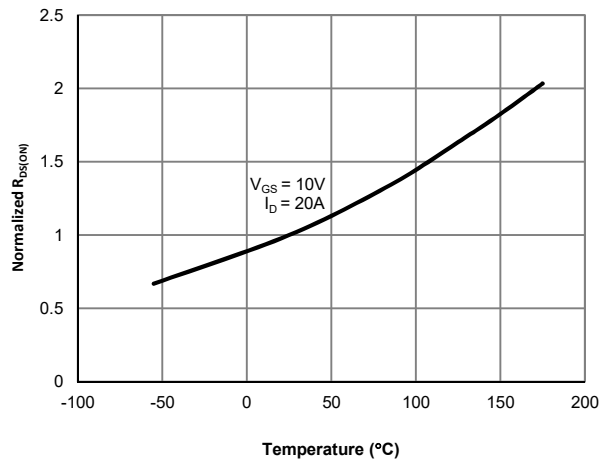
**Figure 1: Saturation Characteristics**



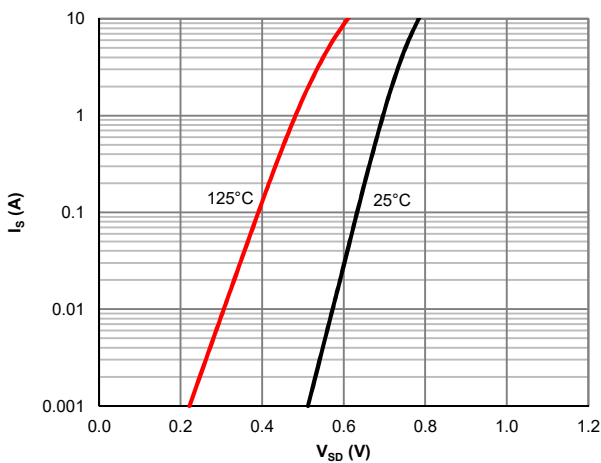
**Figure 2: Transfer Characteristics**



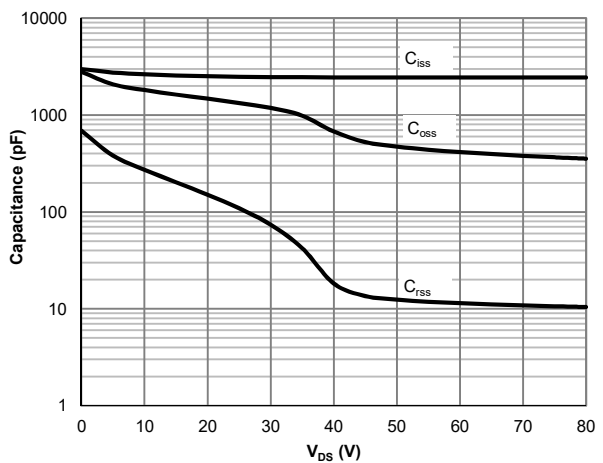
**Figure 3:  $R_{DS(ON)}$  vs. Drain Current**



**Figure 4:  $R_{DS(ON)}$  vs. Junction Temperature**



**Figure 5: Body-Diode Characteristics**



**Figure 6: Capacitance Characteristics**

Typical Electrical & Thermal Characteristics

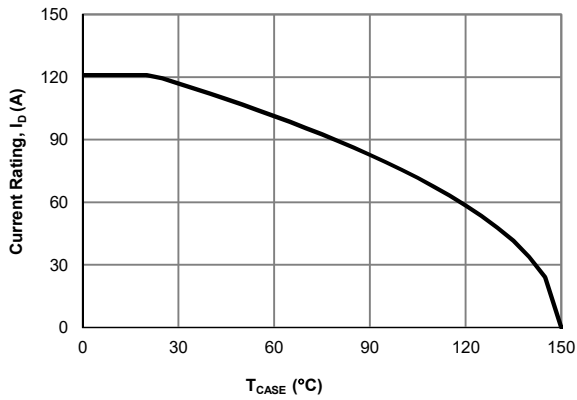


Figure 7: Current De-rating

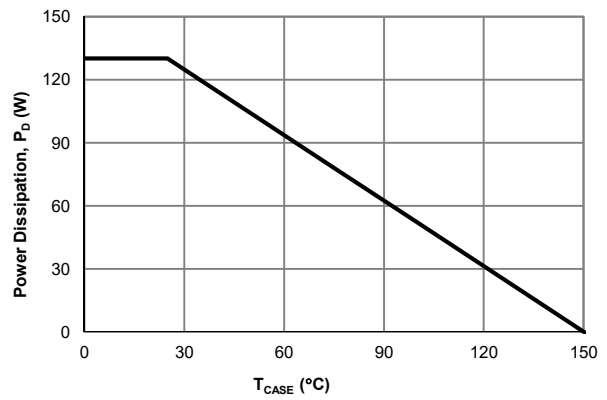


Figure 8: Power De-rating

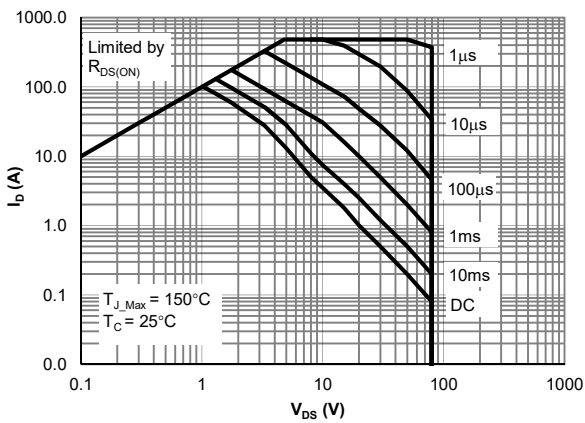


Figure 9: Maximum Safe Operating Area

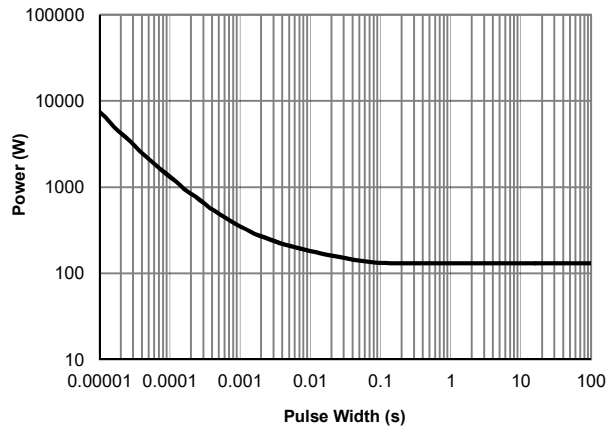


Figure 10: Single Pulse Power Rating, Junction-to-Case

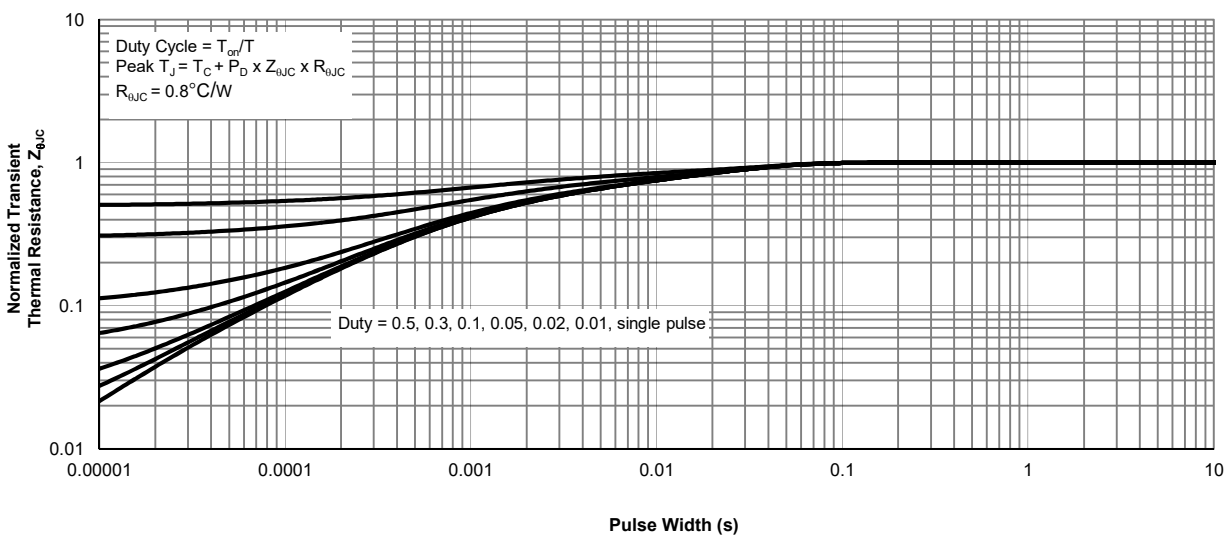
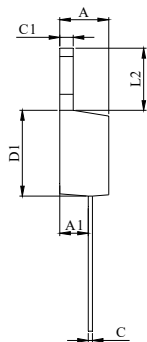
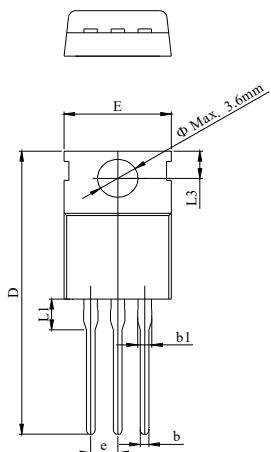


Figure 11: Normalized Maximum Transient Thermal Impedance



**TO-220-3L Package Information** (All units in mm)

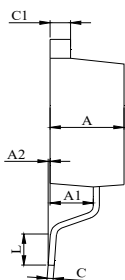
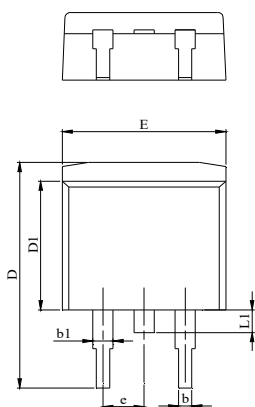
**Package Outline**



DIM.	MILLIMETER		
	MIN.	NOM.	MAX.
A	4.24		4.70
A1	2.20		3.00
b	0.70		0.95
b1	1.14		1.70
C	0.40		0.60
C1	1.15		1.40
D	28.00		29.80
D1	8.80		9.90
E	9.70		10.50
L1			3.80
L2	6.25		6.90
L3	2.40		3.00
e		2.54 BSC	

**TO-263-3L Package Information** (All units in mm)

**Package Outline**



DIM.	MILLIMETER		
	MIN.	NOM.	MAX.
A	4.24		4.77
A1	2.30		2.89
A2	0.00	0.10	0.25
b	0.70		0.96
b1	1.17		1.70
C	0.30		0.60
C1	1.15		1.42
D	14.10		15.88
D1	8.50		9.60
E	9.78		10.36
L	1.78		2.79
L1			1.75
e		2.54	

**Recommended Footprint**

