

检测报告

编号: CANEC2211064102

日期: 2022年06月02日 第1页,共5页

客户名称: 捷捷半导体有限公司
客户地址: 南通市苏通科技产业园井冈山路6号

样品名称: TG-C
以上样品及信息由客户提供。

SGS工作编号: CP22-029144 - GZ
内部编号: 15955733
样品接收日期: 2022年05月26日
检测周期: 2022年05月26日 - 2022年06月02日
检测要求: 根据客户要求检测
检测方法: 请参见下一页
检测结果: 请参见下一页

通标标准技术服务有限公司广州分公司
授权签名

鄧莎莎

Sasa Zhi 鄧莎莎
批准签署人

scan to see the report



CF434E7F



SGS-CSTC Standards Technical Services Co., Ltd.
Guangzhou Branch Testing Center Chemical Laboratory

Unless otherwise agreed in writing, this document is issued by the Company subject to its General Conditions of Service printed overleaf, available on request or accessible at <http://www.sgs.com/en/Terms-and-Conditions.aspx> and, for electronic format documents, subject to Terms and Conditions for Electronic Documents at <http://www.sgs.com/en/Terms-and-Conditions/Terms-e-Documents.aspx>. Attention is drawn to the limitation of liability, indemnification and jurisdiction issues defined therein. Any holder of this document is advised that information contained hereon reflects the Company's findings at the time of its intervention only and within the limits of Client's instructions, if any. The Company's sole responsibility is to its Client and this document does not exonerate parties to a transaction from exercising all their rights and obligations under the transaction documents. This document cannot be reproduced except in full, without prior written approval of the Company. Any unauthorized alteration, forgery or falsification of the content or appearance of this document is unlawful and offenders may be prosecuted to the fullest extent of the law. Unless otherwise stated the results shown in this test report refer only to the sample(s) tested.

Attention: To check the authenticity of testing / inspection report & certificate, please contact us at telephone: (86-755) 8307 1443, or email: CN.Doccheck@sgs.com

198 Kazhu Road, Science Park Guangzhou Economic & Technology Development District, Guangzhou, China 510663

中国·广州·经济技术开发区科学城科珠路198号 邮编: 510663

t (86-20) 82155555 www.sgs.com.cn

t (86-20) 82155555 sgs.china@sgs.com

检测报告

编号: CANEC2211064102

日期: 2022年06月02日 第2页,共5页

检测结果:

检测样品描述:

样品编号	SGS样品ID	描述
SN1	CAN22-110641.001	黑色本体(混合)
SN2	CAN22-110641.002	黑色塑料

备注:

- (1) 1 mg/kg = 0.0001%
- (2) MDL = 方法检测限
- (3) ND = 未检出 (< MDL)
- (4) "-" = 未规定

卤素

检测方法: 参考EN 14582:2016, 用 IC分析。

检测项目	单位	MDL	001
氟 (F)	mg/kg	50	ND
氯 (Cl)	mg/kg	50	1341
溴 (Br)	mg/kg	50	ND
碘 (I)	mg/kg	50	ND

红磷

检测方法: SGS内部方法(SGS-CCL-TOP-215-01), 采用PY-GC/MS / ICP-OES / GC-MS 进行分析。

检测项目	单位	MDL	002
红磷	mg/kg	500	ND

备注: 样品001的测试是基于申请人要求混合测试, 报告中的混合测试结果不代表其中个别单一材质的含量, 该测试数据仅供参考。

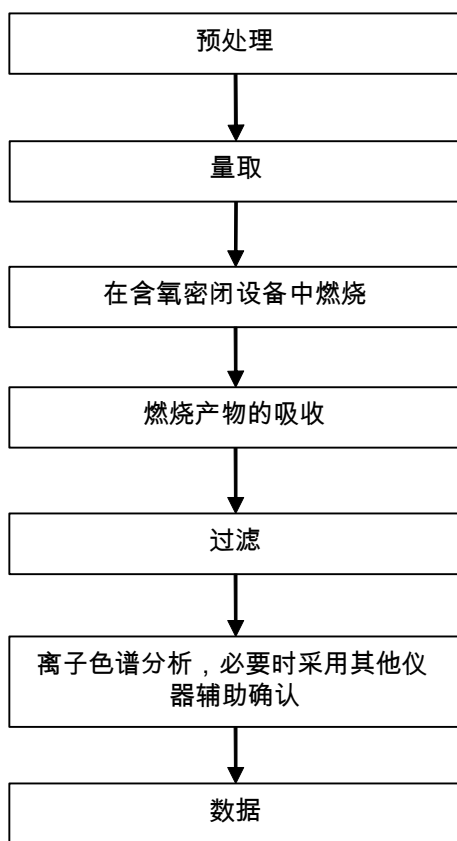
除非另有说明, 参照ILAC-G8:09/2019, 使用简单接受 ($w=0$) 的二元判定规则进行符合性判定。
 除非另有说明, 此报告结果仅对检测的样品负责。本报告未经本公司书面许可, 不可部分复制。
 检测报告仅用于客户科研、教学、内部质量控制、产品研发等目的, 仅供内部参考。



Unless otherwise agreed in writing, this document is issued by the Company subject to its General Conditions of Service printed overleaf, available on request or accessible at <http://www.sgs.com/en/Terms-and-Conditions.aspx> and, for electronic format documents, subject to Terms and Conditions for Electronic Documents at <http://www.sgs.com/en/Terms-and-Conditions/Terms-e-Documents.aspx>. Attention is drawn to the limitation of liability, indemnification and jurisdiction issues defined therein. Any holder of this document is advised that information contained hereon reflects the Company's findings at the time of its intervention only and within the limits of Client's instructions, if any. The Company's sole responsibility is to its Client and this document does not exonerate parties to a transaction from exercising all their rights and obligations under the transaction documents. This document cannot be reproduced except in full, without prior written approval of the Company. Any unauthorized alteration, forgery or falsification of the content or appearance of this document is unlawful and offenders may be prosecuted to the fullest extent of the law. Unless otherwise stated the results shown in this test report refer only to the sample(s) tested.

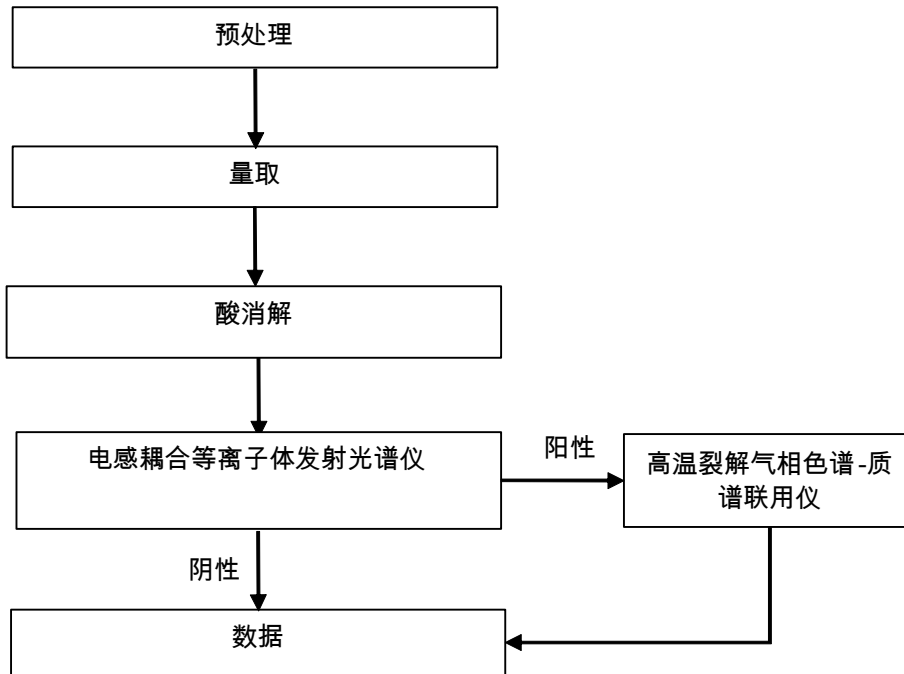
附件

Halogen 检测流程图



附件

红磷检测流程图



样品照片:



此照片仅限于随SGS正本报告使用

*** 报告完 ***

